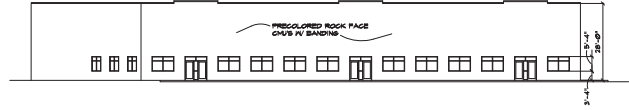
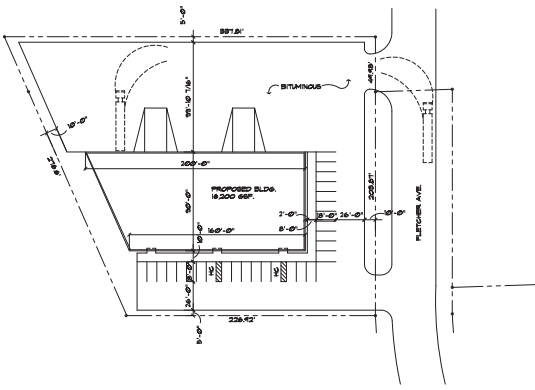


NORTH BRANCH SPEC. BUILDING

NORTH BRANCH, MINNESOTA

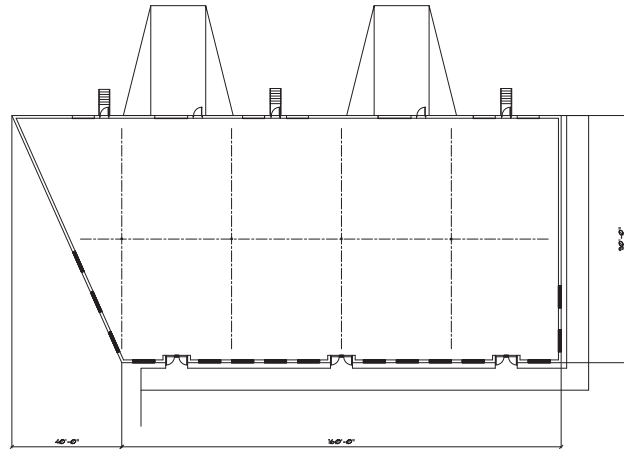


2 SOUTH ELEVATION
WF - P-F



1 SITE PLAN
P - F

ESSBY BUSINESS PARK 1ST ADDITION
BUILDING SIZE: 18,200 G.S.F.
PARKING:
20% OFFICE = 3,240 S.F. # 280 S.F. = 13 STALLS REQ'D.
80% RESL. = 12,960 S.F. # 2,000 S.F. = 7 STALLS REQ'D.
20 STALLS PROVIDED
28 STALLS PROVIDED



3 FLOOR PLAN
WF - P-F



NORTH BRANCH SPEC. BUILDING
SHEET NO. 1
DATE 01-27-2008



For Additional Information Contact:
Josh Kopp
josh.kopp@milconbuilt.com
651-674-8019 x 114



MILCON Inc.

COMMERCIAL

6255 Main St, Ste H | PO Box 454
North Branch, MN 55056
651-674-8019 | FAX: 651-237-0388
www.milconbuilt.com